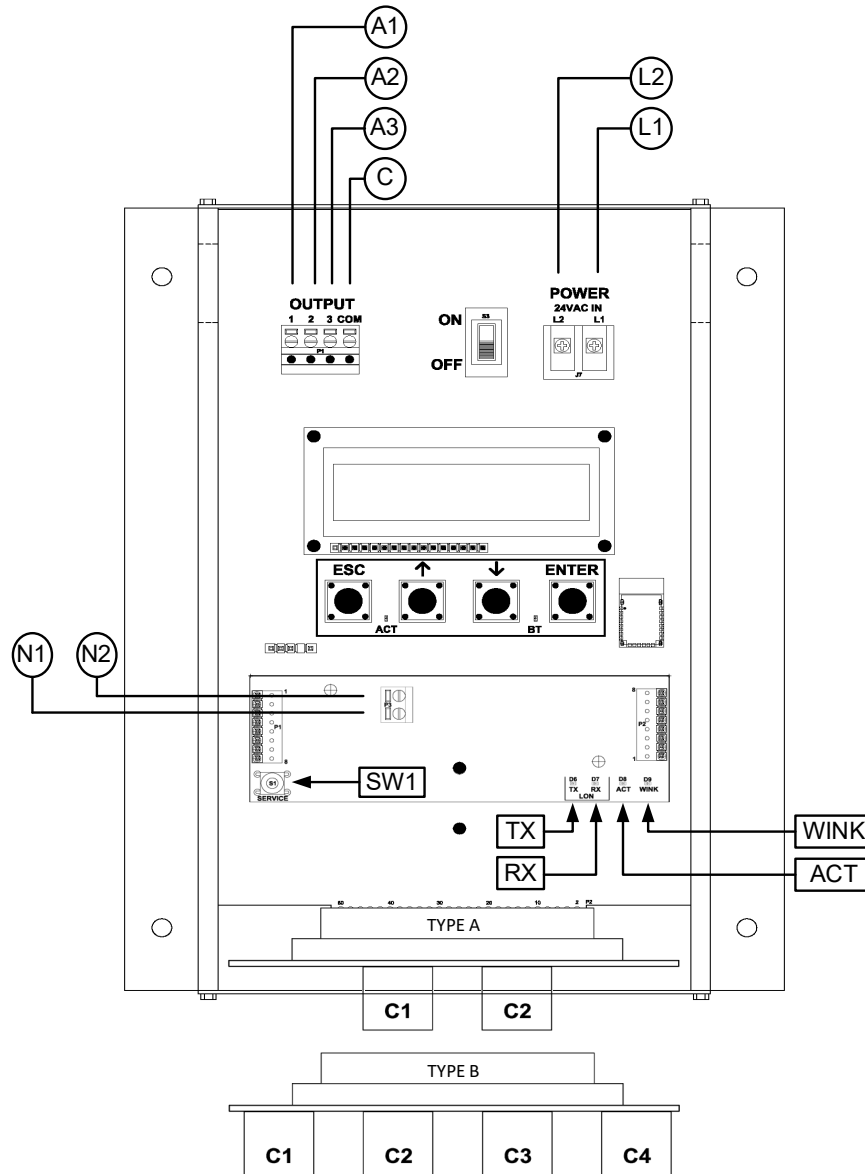
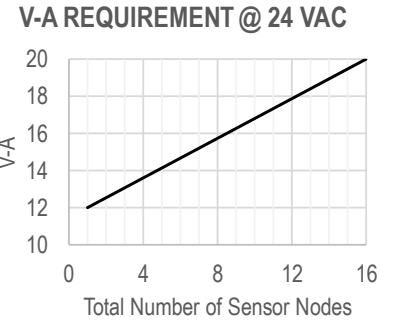


Advantage IV (A4) GTF116e-P WIRING GUIDE



TRANSMITTER CONNECTIONS

| Power | | Analog Out (isolated) | | | | Lon Network | | Type | |
|--------------|------------------|-----------------------|------------------------|--------------------------|---------------|-----------------------|-----------------------|----------------------------|----------------------------|
| L1 | L2 | A1 | A2 | A3 | C | N1 | N2 | A | B |
| 24 VAC (hot) | 24 VAC (neutral) | Airflow + | Temperature or Alarm + | Psychrometric Property + | Signal Common | Network Pair (1 of 2) | Network Pair (2 of 2) | 2 probes x 8 sensors/probe | 4 probes x 4 sensors/probe |



INSTRUCTIONS TO INSTALLER:

- Mount the transmitter in a location where all probe cables can reach the receptacles of the transmitter. Provide a weatherproof enclosure (by others) and mount away from direct sunlight when outdoor mounting is required.
- Connect the sensor probes to the transmitter. Although probes are "plug and play" and connections to specific receptacles are not required, it is recommended that probes are connected Probe 1 to receptacle C1, Probe 2 to receptacle C2, etc. Probe numbers are indicated on each cable hang tag.
 - i* Cables have an FEP plenum rated jacket that are UV tolerant and suitable for operation over the entire operating temperature range of the device.
 - !* Sensor probe plugs are keyed and NOT twist-lock. Align the key and push the plug onto the transmitter receptacle. Twisting may damage the connector pins.
- Select a 24 VAC transformer that provides 22.8 to 26.4 VAC during operation. Refer to the chart above to optimize the transformer size or size the transformer for 20 V-A for each measurement location.
 - !* Multiple transmitters wired to a single transformer must be wired "in-phase" (L1 to L1 and L2 to L2).
- If analog output signals are used, continue to step 5, otherwise skip to step 6.
- Connect each analog output signal required to the host B.A.S. using shielded twisted-pair wire. Properly terminate the shield (typically at the B.A.S.).
 - i* AO3 (relative humidity, enthalpy, or dew point) is only available if the /H humidify sensor option is provided.
 - !* If twisted pair wire and/or shielded cable is not used, extraneous electrical noise can be picked up between the transmitter and host control panel.
- If the LON network connection is required continue to step 7 otherwise skip to 8
- Connect to a LonWorks Free Topology network.
 - i* The network termination is polarity insensitive.
 - !* Use the network cable specified by Echelon (typically Belden 8471 cable or equivalent).
- Refer to the GTF116e-P Startup Guide prior to moving the power switch to the "ON" position.