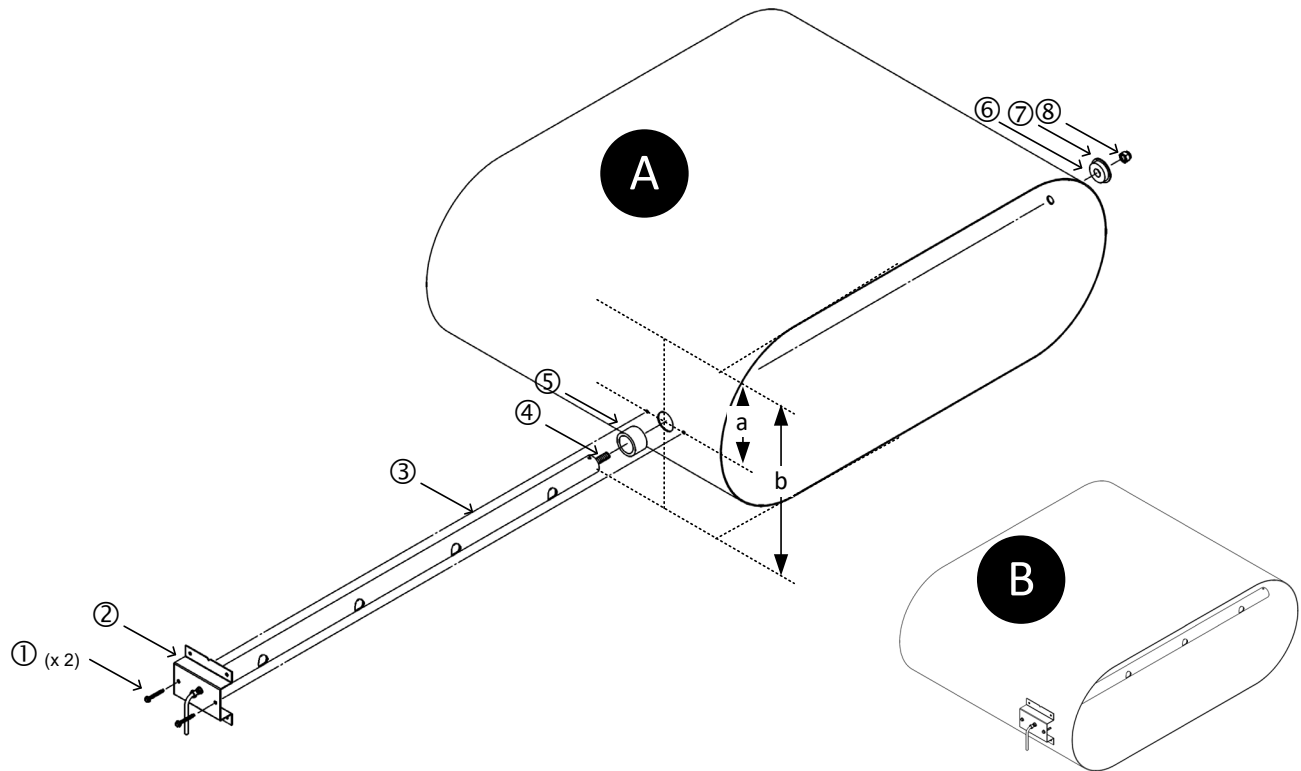


-P Probe Installation (Insertion Mounting - Oval Ducts - Type A)



Step 1. Select a location in the duct or plenum opening that meets or exceeds EBTRON's recommended placement guidelines.



If the location does not meet or exceed placement guidelines the installed accuracy may be compromised and field adjustment may be necessary.

Step 2. Probes are ordered and labeled *Probe Length x Adjacent Side Length*. The *Probe Length* is the major axis (longer dimension) and the *Adjacent Side Length* is the minor axis (shorter dimension) on Type A installations. Verify that the duct size matches the size ordered.



If the probe length ordered is incorrect, the sensors will not be located in the proper location, thus affecting the installed accuracy. Contact EBTRON customer service for more information.



If the actual size of the duct is not equal to the size ordered, the AREA parameter must be changed in the transmitter to display the proper airflow rate in CFM [l/s].



Do not cut the probe! Cutting the probe will void warranty.

REFER TO FIGURE "A" WHEN COMPLETING STEPS 3 TO 16.

Step 3. Vertically mounted probes subject to water condensation or accumulation (typically supply air and outdoor air intakes) should be mounted so that the cable side of the probe is at the top of the duct.

Step 4. Mark a center-point where the probe will be located in the middle of the radiused side of the flat oval, dimension 'a' = 'b'/2, where 'b' is the minor axis (shorter) dimension of the flat oval including any internal insulation.



Use a carpenter's square or similar tool across the flat edge of the oval to locate the center-point on the of the radiused side.

- Step 5. If the probes are provided with the terminal mounting bolt [④], follow Steps 6 to 7, otherwise skip to Step 8.
- Step 6. Mark a center-point directly across the duct from the points marked in Step 4.
- Step 7. Drill a ½ inch hole at the probe center-point marked in Step 6.
- Step 8. Drill a 1-1/8 inch hole at the probe center-point marked in Step 4.
- Step 9. Remove the large foam gasket [⑤] from the probe tube [③] and insert the probe into the duct. Use the probe mounting bracket [②] as a template to mark the location for the two center-line mounting screws [①]. The mounting bracket will self-align on the round portion of the oval to the direction of airflow. Remove the probe from the duct.



Removal of the foam gasket ensures that the insertion mounting plate [②] lays flat on the duct and properly aligns in the direction of airflow.

- Step 10. Drill appropriately sized pilot holes for each insertion mounting bracket screw [①] location (screws not provided) marked in Step 9.
- Step 11. Make sure the large foam gasket [⑤] is installed on each probe tube [③] against the insertion mounting bracket [②].
- Step 12. Insert the probe tube [③] in the duct with the airflow directional arrow pointing in the direction of airflow (it is ok if the arrow is upside down).
- Step 13. Secure the insertion mounting bracket [②] to the duct with the two mounting screws [①] selected.
- Step 14. If the probe is provided with the terminal bolt [④], follow Steps 15 to 16, otherwise skip to Step 17.
- Step 15. Place the small foam gasket [⑥], large fender washer [⑦] and lock nut [⑧] on the terminal mounting bolt [④].
- Step 16. Tighten the lock nut [⑧] until the small foam gasket [⑥] is compressed to approximately 50% of its original thickness.
- Step 17. Probe installation is complete! Figure "B" shows the completed probe installation.