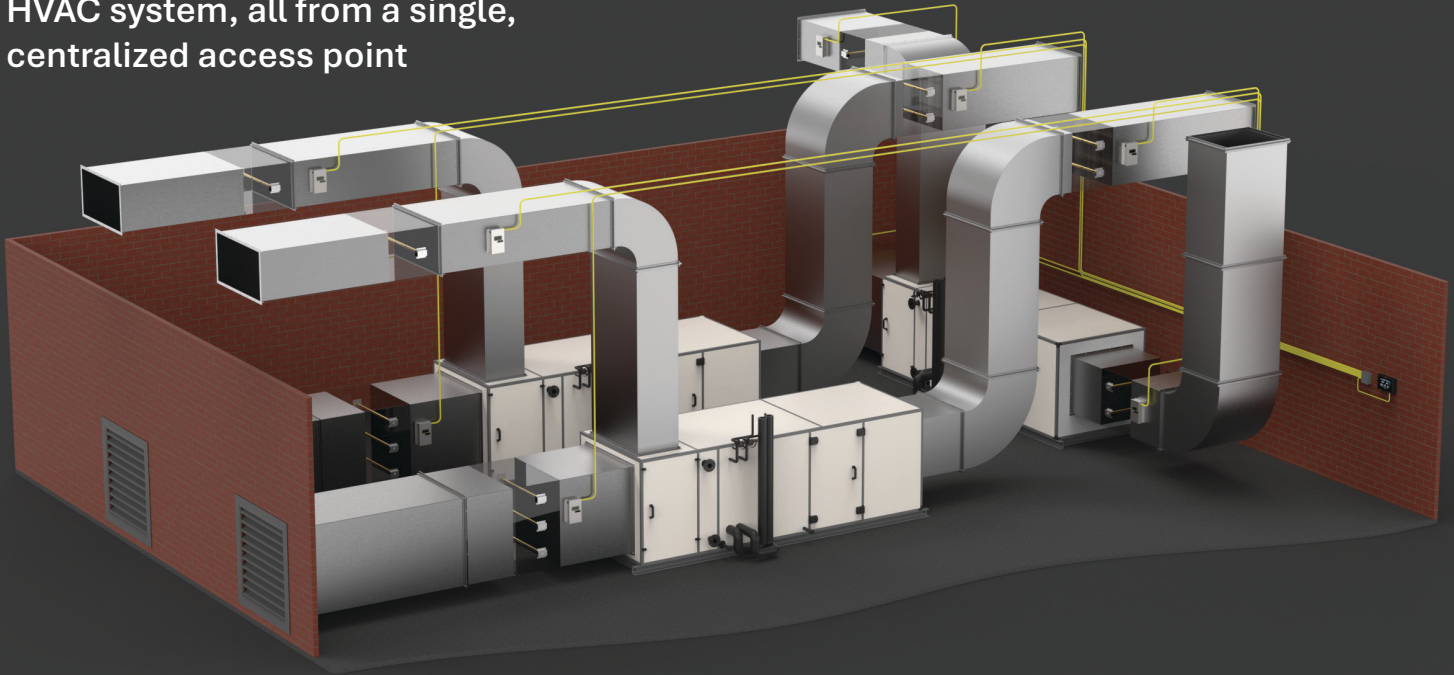


# IAQ ENFORCER<sup>®</sup> SYSTEM SDX-1000 Smart Display Panel

Application Driven Display that Increases  
System Functionality and Provides a Single  
Access Point for Up to 20 Measurement Devices



The **IAQ Enforcer® System** is the complete solution for building airflow management, integrating EBTRON connected devices to view, configure, diagnose, and manage all airflow paths within the HVAC system, all from a single, centralized access point



The **SDX-1000 Smart Display Panel** serves as the centralized hardware interface of the system, offering an intuitive display panel that allows users to view and manage the performance of all connected EBTRON devices across the building's airflow



### Smarter Monitoring

View, configure, diagnose, and manage up to 20 measurement devices from a single access point

### Designed for the Future

Increase performance and functionality of your system by adding newly released applications from EBTRON

### Application Driven

7-inch touchscreen interface with mobile style applications gives unmatched functionality for any project or system

### Network Connectivity

Dedicated Ethernet network operates independently, avoiding BAS or building IT network interference

### Lower First Costs

Eliminate the need for extended cable lengths by mounting device transmitters locally to the measurement probes

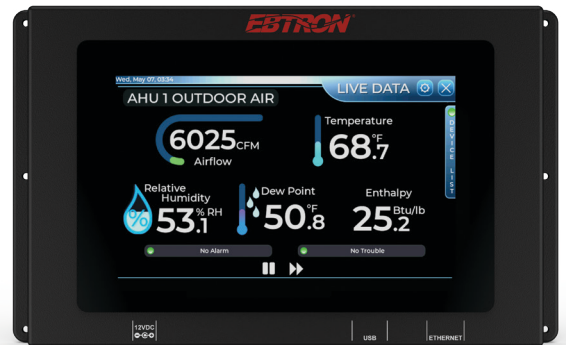
### Compatibility

Compatible with select EBTRON, GreenTrol, and other approved third-party devices

# Default SDX-1000 Applications

## LIVE DISPLAY

- Continuously displays live airflow and psychrometric data (including: temperature, humidity, enthalpy, and dew point) for each connected measurement device\*
- Intuitive graphical user interface gives real-time system performance and status, all at a quick glance
- Easily view and diagnose any active system alarms or issues



## DEVICE CONFIGURATION

- Provides full access to view and change all configuration settings for each connected measurement device
- Mirrors the functionality of the EBTRON transmitter's menu structure, allowing for an enhanced user experience
- Copy and transfer configuration settings between devices to streamline setup and reduce configuration time



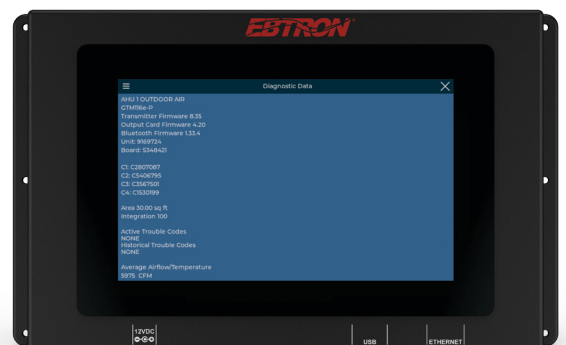
## DEVICE SUMMARY

- Displays a consolidated, tabulated list of all connected measurement devices on a single, scrollable screen, allowing for quick comparison of various system flow paths
- Device data and information can be saved for external use via a connected USB memory device



## EB-LINK READER

- View advanced individual sensor data (e.g., traverse data) and complete diagnostics for each connected measurement device
- Easily save diagnostic data to a connected USB memory device and send to EBTRON's service team, enabling faster support and quicker resolution of any device issues



\* Humidity, Enthalpy, & Dew Point available with /H option on GTX116e-PC

# How the IAQ Enforcer® System Benefits You

---

if you're a:  
**Design Engineer**

- Provide a complete solution that integrates all airflow paths
- Track and document code compliance while ensuring optimal IAQ by verifying that airflow rates meet design specifications
- Optimize device performance through centralized management, allowing for improved system efficiency and energy use

if you're a:  
**Building Owner**

- Easily verify HVAC system performance, ensuring optimal airflow and ventilation conditions in real-time for efficient building management and occupant comfort
- Proactive troubleshooting alerts prevent downtime and keep systems running
- Verify ventilation and airflow rates without a centralized BAS

if you're a:  
**Controls Contractor**

- Set up, configure, and troubleshoot devices from a single interface without the need to access difficult or hard-to-reach locations
- Reduces the need for extended transmitter cables makes your projects and installations more affordable
- Network auto-discovery of all connected devices simplifies setup and installation

if you're a:  
**Balancer or Commissioning Agent**

- Real-time access to all connected airflow devices simplifies startup, balancing, and system verification
- Quickly identify airflow issues, device alarms, or system mismatches during commissioning and troubleshooting

---

**EBTRON**

1663 Highway 701 South  
Loris, South Carolina 29569  
United States  
Ph: 1-843-756-1828

[www.ebtron.com](http://www.ebtron.com)



Learn more about:  
IAQ Enforcer® System  
SDX-1000 Smart Display Panel



Learn more about:  
SDX-1000  
Application Store



Learn more about:  
EBTRON solutions