



IAQ Enforcer™ SDX-1000 Smart Display

Application Driven Display that Increases Functionality and Provides a Single Access Point for Up to 16 Measurement Devices

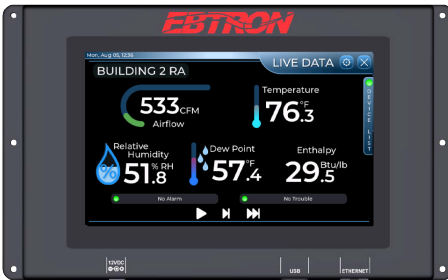
The SDX-1000 is the Ethernet version of the IAQ Enforcer Smart Display Panel Series. The display operates on a stand-alone Ethernet network with up to sixteen compatible measurement devices. Devices with multiple sensor measurements are considered one "device." Auto-discovery and setup of all approved connected devices at power-up require no networking experience. The Smart Display supports password-protected administrative and user privileges for advanced security and peace of mind.



EBTRON®
a measurable difference!



Home Screen - More Applications to Come



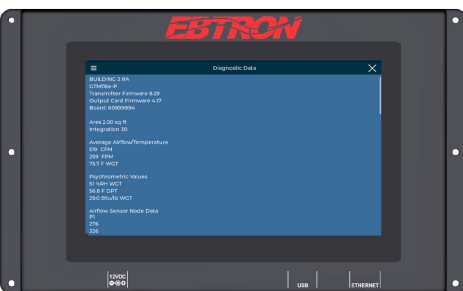
Live Display App



Device Summary App



Device Configuration App



EB-Link Reader App

IAQ Enforcer™ System SDX-1000 EB-Bus Ethernet Smart Display Panel (SDP) for Compatible EBTRON, GreenTrol, and Approved Third-Party Devices.

Performing manual checks on air handling units can be both expensive and time-consuming. However, the new smart display, SDX-1000, is a central location to access, monitor, configure, and validate measurement devices. The SDX eliminates the need for additional cable lengths, allowing you to mount each transmitter within its location. It collects data from up to 16 devices installed throughout the building, providing valuable information on optimizing ventilation performance and maintaining occupant comfort levels.

- Manage up to sixteen measurement devices from a single location
- Tablet/phone style interface with factory-installed applications that can be updated and/or added over time
- 7-inch diagonal capacitive touch full-color display (800x480 resolution) with a 900MHz microcomputer, 512 MB of RAM, and 8 GB of flash memory
- Compatible with EBTRON, GreenTrol, and other third-party approved EB-Bus Ethernet devices (visit EBTRON.com/SDPDevices or scan the “DEVICES” QR code for up-to-date devices supported)
- A dedicated Ethernet network does not interfere with BAS communications (BAS connections to separate analog or network outputs of each measuring device)
- View, configure, validate, and diagnose multiple measurement devices
- Bidirectional capability allows transmitters to be installed closer to the sensor probes, thus eliminating the need for extended cable lengths
- The display or Ethernet switch can locate transmitters 328 ft. [100 m] away using low-cost CAT5e or higher wiring
- Updates and new applications can easily be added over time using a USB Type A memory device
- Three-year warranty
- Customer support for the lifetime of the product

The SDX-1000 works with GTM116e and GTM108e with Firmware 4.18 or higher with the benefits of enhanced diagnostics and full read-and-write capabilities. Upgrading the output card on older units allows you to unlock the full potential of the SDX-1000, ensuring seamless integration and optimal performance with the SDX-1000 smart display.

GTM116e and GTM108e with Firmware 4.17 will provide read and write capabilities and GTM116e and GTM108e with Firmware 3.13 and earlier are limited to read-only functionality. Upgrade the output card for the full benefits of the SDX-1000 smart display.



App Store



SDX-1000



Devices



1663 Highway 701 South
Loris, South Carolina 29669
www.EBTRON.com